

Parkheath

Sold on Service

Priory Road NW6

£2,300 PCM (£531 per week) - Camden Band D



Lovely, spacious one-bedroom apartment in South Hampstead

680 sq. ft. (63 sq. m.) of bright, well-planned space

Wood flooring throughout

Modern separate kitchen with integrated dishwasher

Bathroom/WC, hallway storage, and access to communal garden

West Hampstead Office 020 7794 7111

Raised ground floor of a charming period conversion

High ceilings and period features

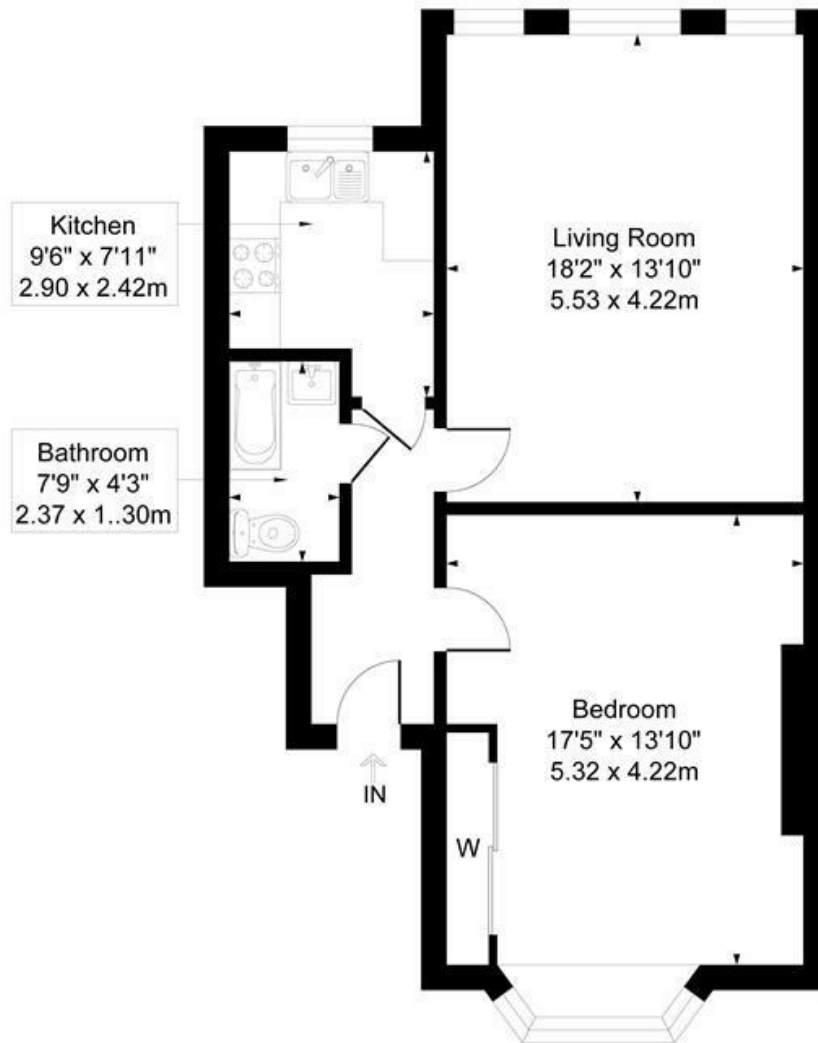
18' reception/dining room, perfect for entertaining

Large 17' bedroom with wardrobes

EPC: Rating C, Council Tax: Camden band D

Priory Road

Approximate Gross Internal Area = 63 sq m / 680 sq ft



Measured in accordance with RICS guidelines. Every attempt is made to ensure accuracy
However all measurements are approximate.
The Floor plan is illustrative purposes Only and is not to scale
ELLIE CLAIRE PHOTOGRAPHY LTD

The particulars do not constitute part of an offer or contract. The particulars, including text, photographs and plans, are for the guidance only of prospective purchasers/tenants and must not be relied upon as statements of fact. The descriptions provided therein represent the opinion of the author and whilst given in good faith should not be construed as statements of fact. Nothing in these particulars shall be deemed a statement that the property is in good condition or otherwise or that any services or facilities are in good working order. All measurements are approximate